



Black technology from China

Wireless Color Doppler Ultrasound Scanner

For bovine, equine, ovine scanning

STANDARD
2
YEAR WARRANTY

Technology Driven
2-Year Warranty

Do More | Faster | Focused



Applications

BestScan® S10

Visit www.bmv.cc for more information
facebook.com/bmvtechnology | twitter.com/bmvtechnology



ADD: 4/F, BMV of Yinjin Building, Block 71, Baoan Centre District, Shenzhen 518010, P.R. China
Tel: +86-755-26564580
E-mail: sales@bmvc.com
Web: www.bmv.cc

BMV is first brand in the veterinary industry of China.
Set R&D, production, sales in one of the medical equipment manufacturers, service providers

BMV & BestScan® are registered trademarks or trademarks owned by BMV Technology Co., LTD.
©2008-2019 BMV Technology Co., Ltd. All rights reserved.
Specifications subject to changes without prior notice.
P/N: ENG-S10-BROCHURE-210285X1 0P-201906



The industry first dedicated AI-Powered wireless color Doppler ultrasound

128
Elements

IP67
Waterproofing grade

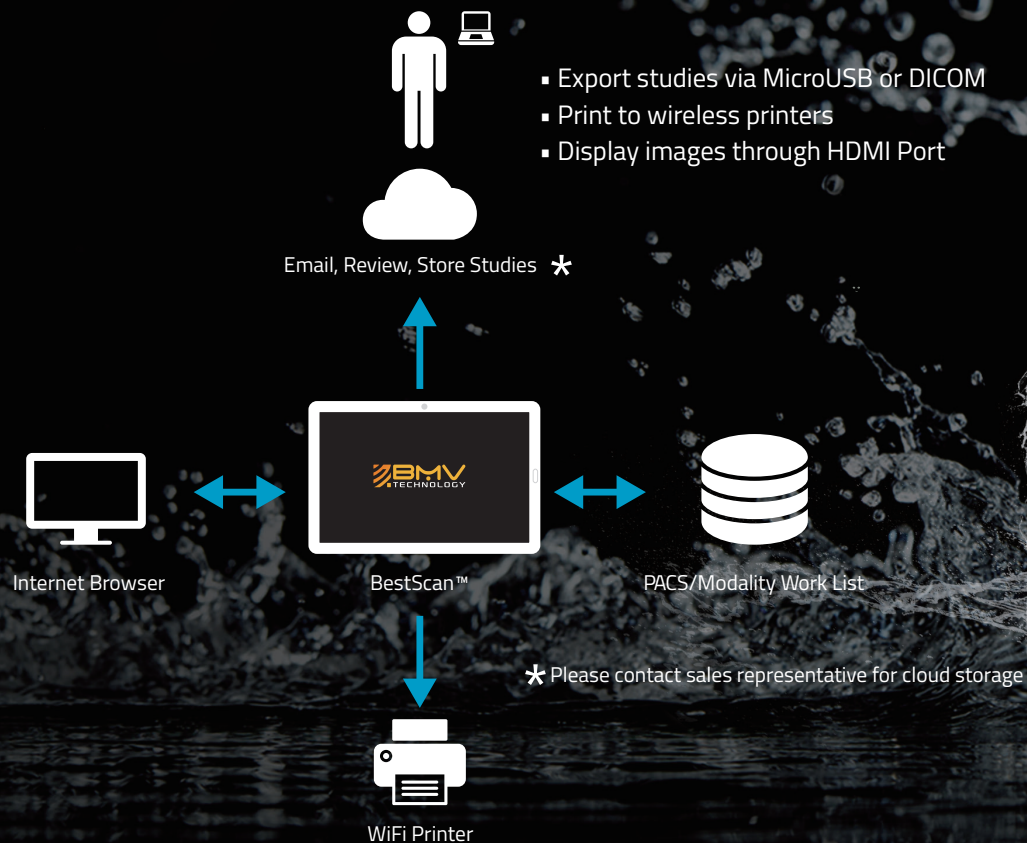
14h
Battery life

650g
Extremely lightweight
body design

WIFI
Complete wireless
freedom

Do More

Connectivity, simplified



Do More | Faster | Focused

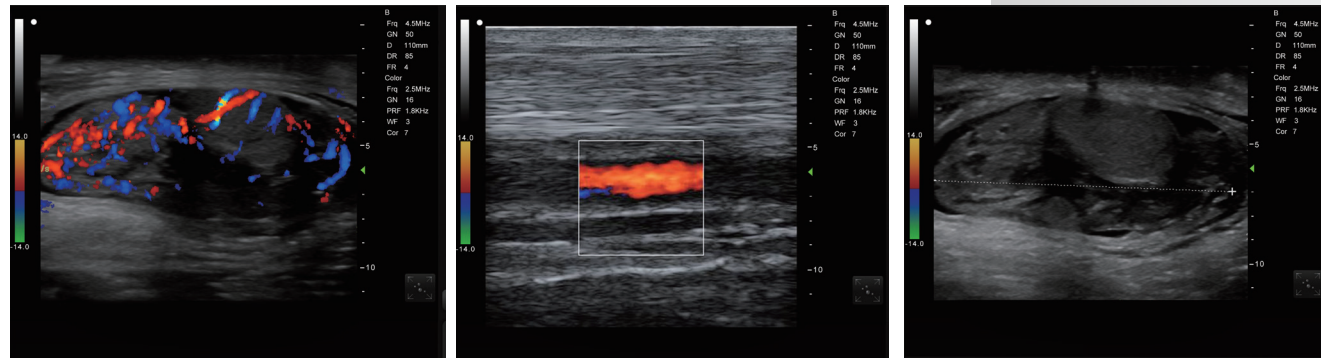
Connectivity: Export studies via MicroUSB or DICOM, Print to wireless printers, Share, send and archive images, Display images through HDMI port



S10 Wireless Color Doppler Ultrasound Scanner

BestScan® S10 is wireless color Doppler ultrasound system with the exciting breakthrough in technology such as AI for better images, wireless freedom, works on popular smart device, specifically engineered for all aspects of bovine, equine, pig, sheep and goats reproductive imaging, as well as for equine tendon imaging.

Uncompromised clarity



Innovative ergonomic design in every details

- Wireless Freedom
- Works on Android, iOS and Windows
- Lithium battery power supply for 14 hours
- Record videos and save images on your smart devices
- High sensitivity transducers with AI for better images
- 128 elements, receiving on 32 channels, 26 frames per seconds
- Waterproof and dustproof performance
- Clean up's a breeze. From the probe tip to the display, everything is easily cleanable.
- Its extremely lightness and finish allows for effective use, avoiding the risk of cables animal.



Design in line with operator's habits



Wireless Charging



I-Scan®



Wireless charging dock



iOS device



Android device



Windows

Faster

How to download the app?
The robust S10 app is available on compatible Android smart devices via scanning code to download or visit www.bmv.cc/app

App-based ultrasound
So simple and smart

Deeper penetration with curved probe technology





S10 system bundle, your dedicated solution

Acquiring S10 is simplified by purchasing a bundle with a unit price for all that's needed to put S10 to work in your environment. The package includes:

1. S10 system with probe
2. APP software
3. 8 inch Tablet or I-Scan™
4. Customized tablet case
5. AC Adapter for system
6. Customized carry case
7. Rectal Probe Introducer
8. 2-year warranty

Dedicated accessories

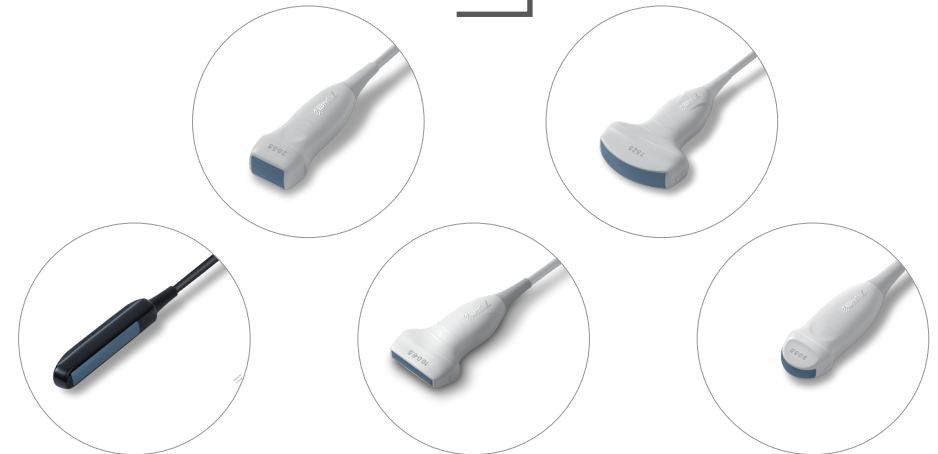
A wide range of dedicated accessories is available for this system, such as viewing options such as Android, iOS phone/tablet and goggles, and optional accessories such as wireless charger, IFR introducer, chest mount, wrist mount, and so on.

	I-scan smart goggle Customized Binocular Type HD Wearable Video Glasses		Field working bag Storage the probe and its accessories
	Rectal Probe Introducer Rounded 85cm,eases your shoulder and arm strain for Fetal Aging,Pregnancy		Ipad with S10 software installed Use as a viewing device (manufactured by Apple Inc)
	Chest Mount for Tablet To be used in conjunc- tion with your choice of tablet		Power bank 10000mAh, 147x71.2x14.2mm, supply power for goggle
	Wrist Mount for phone To be used in conjunc- tion with your choice of Phone		Mobile Car Charger Battery Charging in the car

Equine, Small & Farm Animals

Intelligence Empowers More

Optional Probe



i-Scan® smart glasses

- Wireless,smart,do more.
- OLED 1080p HD display
- 32GB storage
- 2.0 GHZ QUAD code CPU
- Approximately 12-hour diagnoses powered by power bank

※ Advantage and how-to use, you can visit www.bmv-vet.com/en/smart-i-scan



BMV Service & Support: Inclusive wireless upgrades, backed by a full 2-year warranty from BMV